



ACE ENG
Advanced Consulting Enterprise





ACE Eng

Advanced Consulting Enterprise

📍 202, 24-2, Sinseol 3-gil, Boryeong-si, Chungcheongnam-do, Korea.

☎ +82 41 933 1320

🏢 2nd Floor, 20, Gangnam-daero 114-gil, Gangnam-gu, Seoul, Korea.

☎ +82 2 6949 1320

✉ cau07@nate.com 📠 +82 50 4047 6490 🌐 www.aceengco.com



ACE Eng

Advanced Consulting Enterprise

01
MESSAGE

02
HISTORY

03
ABOUT US

04
ORGANIZATION

05
SERVICES

06
MAJOR WORKS

WELCOME MESSAGE

ACE Eng is dedicated to delivering "Bester technology" for building a "a Better tomorrow" be leveraging value-added engineering

Since our foundation in 2019, we have built a unique hub of qualified engineers. Engineering expertise cumulated by pursuing numerous mega-projects is integrated into our way of thinking and our deliverables. We keep expanding qualified engineer pool and broadening our service areas.

By leveraging our experiences, technology excellence and enthusiasm, we take vivid role to build better world. We understand that technology innovation is the key to reinforcing our competitive edge. That's way we invest in R&D and develop strategic partnership between industry leading firms to deliver more advanced technology solutions. Our efficient and dynamic organization enables us to focus on our client's evolving needs in applying new technology solutions. Our voyage has just started, so we put more empathize on technology innovation.

We're dedicated and committed to client satisfaction. We always try to adopt more break-through technology and top quality design for our clients. We established our first global operations in Seoul Korea for optimized service delivery of global projects. ACE Eng Korea is the base camp of offering truly integrated service with "thinking global, deliver local" approach.

We always do our best to deliver a commercially successful and environmentally sustainable project, anywhere in th world.

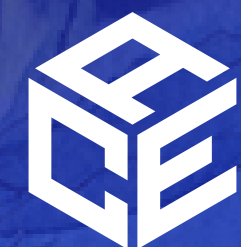
We want to keep growing with you!

Seung Sik CHAE

C.E.O & President



ABOUT US



ACE Eng. Co., Ltd

ACE Engineering is a unique hub for qualified engineers. With extensive technology back ground and on-site experience, we always do our best to deliver state-of-the-art technology and advanced solutions.



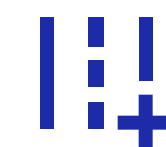
HARBOR & OCEAN SECTOR

The best performance of port planning, design and research based on specialized technology



URBAN SECTOR

The performance of urban planning industrial complex planning based on accumulated know-how of urban design professionals



ROAD SECTOR

The performance of road planning, design, research and supervision based on accumulated experience and design know-how



OVERSEAS BUSINESS

Proposal, feasibility study, consulting, basic & detailed design and supervision for overseas projects

OUR SERVICES



Infrastructure Design

- Roadway
- Railway & metro
- Urban / land development
- Maritime works in association with port, power plant, chemical plants, and shipyard



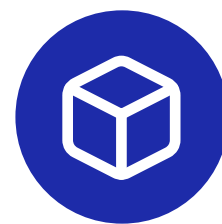
Field Engineering / Construction Supervision

- Developing working / shop drawings
- Providing troubleshooting solutions in construction
- Providing alternative technical solution
- Engineering support for procurement
- BIM(Building Information Modeling)



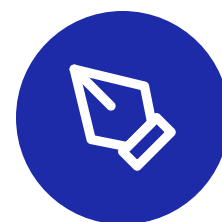
Planning / Feasibility Study

- Creating sustainable and efficient development planning
- Analyzing project feasibility



Soil Investigation & Soft Soil Improvement

- Field soil investigation and laboratory test management
- Selecting and proposing cost-saving solutions and optimized soft soil improvement plan
- Management and construction of soft soil improvement project using vacuum method



VE / Risk Management Consulting

- Proposal of economical design and construction solutions
- Value engineering
- Risk management for design and construction



HISTORY

ACE Eng is unique technology company committed to changing the landscape for its clients. With technical excellence and quick decision making processes, we continue to grow.

We're expanding our coverage in global locations. Establishment of our global operation, ACE Eng Korea, is one of our efforts to offer excellent engineering services addressing complex local challenges. Developing and implementing ground-breaking technology is also the focal point of our activities. In 2019, the Technology Institute in Seoul, Korea became the cornerstone of ACE Eng's competency where we have developed innovative research and developments for our clients around the world. In addition, ACE Eng provided the most advanced technology services to all of our clients. Our efforts to be the "ACE Engineering Company" continue.

- **2022**

Opened a new head office in Boryeong, Chungcheongnam-do, and operated two offices including the Seoul office.

- **2021**

Registered as a member of Seoul city government, Korea Construction technology serviced business

- **2020**

Registered as a member of Korea Engineering & Consulting Association with the field of Harbor & Coastal Engineering

- **2019**

Our Humble Beginnings

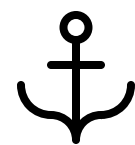
2019 ACE Eng Co., Ltd. founded

ORGANIZATION

"ACE Eng" is the most valuable asset of our company.

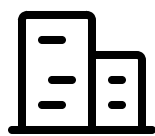
We Provide comprehensive one-stop services including planning, preliminary design, detail design and construction in the field of structure, Maritime, Geotechnical engineering, Urban and Land Development. Also, our engineers of Infrastructure Planning Division have brought a great store of knowledge and on-site experience to design roadway, railway & metro, shipyard and dry dock.

We have a diverse, top-quality workforce of skilled engineers with extensive on-site experience. Thanks to these contributors we deliver the engineering solutions to meet the needs of our clients across the globe. Most of ACE Eng's talented engineers are educated with the leading engineering degrees across the world, coupled with extensive on-site experience including leadership of Korea and worldwide projects. With deep technical expertise, our project leaders deliver perfectly-engineered solutions to fit all our clients' needs.



Maritime Engineering Division

- Terminal planning
- Offshore engineering
- Dredging & reclamation
- Shore protection
- Breakwater



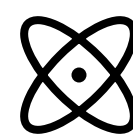
Geotechnical Engineering Division

- Soil investigation
- Foundation design
- Soil improvement design



Structural Engineering Division

- Civil structures
- Maritime structures
- Offshore structures



Land Development Division

- Land development planning
- Complex development
- Landscaping



Infrastructure Plananing Division

- Roadway
- OShipyard & dry dock

MAJOR WORKS

ACE Eng successfully delivered mega-projects in maritime engineering, structural engineering, geotechnical engineering, urban & land development. Now, we start to build reputation for diversified service areas including road & land development, shipyard design.

Based on our experiences and accumulated know-how, we ensured the project profitability and the reduced risk of its implementation. We also planned its facilities to feature optimized space utilization and guaranteed usability and sustainability. We anticipate our clients' challenges and as a result we were able to provide the right solutions to our project planning. ACE Eng has proven experience of success on both small and large projects completed in the most challenging conditions. We always deliver differentiated solutions fitting to the environment to ensure operational efficiency.



Maritime Engineering Division is a key player in providing the best solutions to planning and design of maritime infrastructures including the breakwater, revetment and jetty. As a specialist group of Mega-port planning and feasibility studies, we do our best to provide high-quality solutions to our clients.

MAJOR WORKS



Seoul Government

Korea(2021), Basic Designt
Seoul Metropolitan Government

Basic & Detail Design for Bukseong Port Dredging Soil Dumping
Ground (Superstructure) Construction



Hyundai E&C

Korea(2020), Basic & Detail Design
Hyundai E&C

Saemangeum Smart Waterside City Reclamation Work



STX Engine, MOT

Tanzania(2019), Design & Supervision
STX Engine, MOT of Tanzania

EPC Project of Slipway Construction in Victoria Rake in Tanzania

MAJOR WORKS



Daewoo Shipbuilding

Korea(2017), Basic & Detail Design
Daewoo Shipbuilding & Marine Engineeringractor

Daewoo Shipbuilding & Marine Engineering Co., Ltd.Test Quay
Extension Work



Ulsan City

Korea(2019), Feasibility Study
Ulsan Metropolitan City

Ulsan Cruise Quay Feasibility Study



Hyundai E&C

Korea(2013), Basic & Detail Design
Hyundai E&C

Incheon International Passenger Quay (Step2) Construction

MAJOR WORKS



Jeju Naval Base Basic

Korea(2020), Basic & Detail Design
Republic of Korea Navy, Samsung Heavy Industries

Jeju Naval Base Basic & Detail Design



MMHE West Finger Pier

Malaysia(2008), Basic & Detail Design
Samsung Heavy Industries

Basic & Detail Engineering for MMHE West Finger Pier and Other
Associated Works

MAJOR WORKS

Bukseong Port Dredging

2021, Basic & Detail Design
Incheon Regional Office of Oceans and Fisheries

Basic & Detail Design for Bukseong Port Dredging Soil Dumping Ground (Superstructure) Construction

Ulleung Airport

2021, Detail Design
DL E&C

Detail Design for Ulleung Airport Seawater Exchange (Pump Type) Project

Incheon New Port

2021, Detail Design
Hyundai E&C

Detail Design for Incheon New Port (Phase 1-2) Container Quay Construction

Jamjin Port

2020, Basic & Detail Design
Incheon Metropolitan City

Basic & Detail Design for Jamjin Port Development Project

Saemangeum New Port

2020, Basic Investigation
Ministry of Oceans and Fisheries

Saemangeum New Port Quay (Step1) Construction

Samcheok Port

2020, Basic Design
Gangwon Province

Basic Design of Samcheok Port Reinforcement Work

MAJOR WORKS

Daeyeon Port

2019, Basic & Detail Design

Gijang-gun, Busan

Basic & Detail Design for Daeyeon Port Lighters Wharf

Mokpo New Port

2019, Detail Design

Mokpo Regional Office of Oceans and Fisheries

Detail Design for Automobile Quay Construction in Mokpo New Port

Shipyard in Bangladesh

2018, Proposal

Bangladesh Navy

Proposal for Construction of Repair Shipyard in Bangladesh

Busan New Port

2018, Basic & Detail Design

Busan Regional Office of Oceans and Fisheries

Basic & Detail Design for Small Ship Quay Construction in Busan New Port

Maritime Infrastructure

2016, Consulting & Supervision

Agence Nationale Des Affaires Maritimes

Contract for Consulting Services for the Maritime Infrastructure Establishment Project 2(MIEP2)

Hyundai Heavy Industries

2007, Basic & Detail Design

Hyundai Heavy Industries

Hyundai Heavy Industries H-Dock Construction Basic & Detail Design

Thank you!

Let's do this!



ACE Eng. Co., Ltd

📍 H.O

202, 24-2, Sinseol 3-gil, Boryeong-si, Chungcheongnam-do, Korea.
+82 41 933 1320

📍 B.O

2nd Floor, 20, Gangnam-daero 114-gil, Gangnam-gu, Seoul, Korea.
+82 2 6949 1320

📠 FAX

+82 50 4047 6490

✉ EMAIL

cau07@nate.com

🌐 WEBSITE

www.aceengco.com